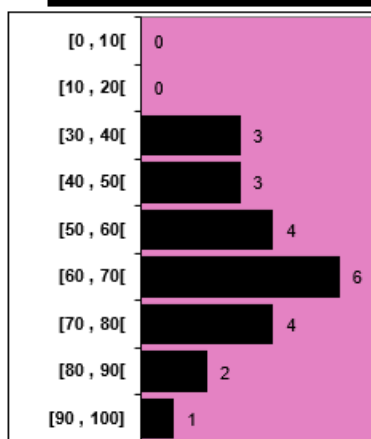


Atelier 3 – Au départ des résultats aux EENC

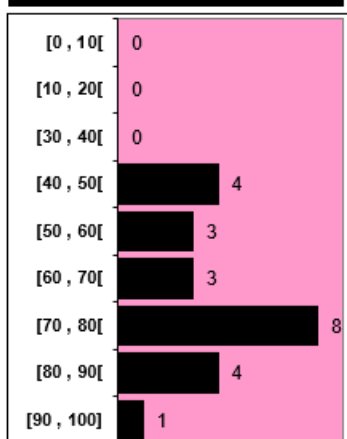
En 3^{ème} primaire :

Score global à l'épreuve		Domaine des nombres		Domaine des grandeurs	
Total /	Total en %	Total /	Total en %	Total /	Total en %
89		65		24	
72	81%	58	89%	14	58%
62	70%	47	72%	15	63%
62	70%	48	74%	14	58%
85	96%	62	95%	23	96%
66	74%	52	80%	14	58%
49	55%	38	58%	11	46%
72	81%	57	88%	15	63%
69	78%	51	78%	18	75%
67	75%	54	83%	13	54%
63	71%	47	72%	16	67%
50	56%	45	69%	5	21%
34	38%	29	45%	5	21%
32	36%	29	45%	3	13%
61	69%	47	72%	14	58%
52	58%	42	65%	10	42%
53	60%	41	63%	12	50%
37	42%	30	46%	7	29%
60	67%	50	77%	10	42%
61	69%	46	71%	15	63%
62	70%	50	77%	12	50%
33	37%	27	42%	6	25%
43	48%	33	51%	10	42%
44	49%	38	58%	6	25%

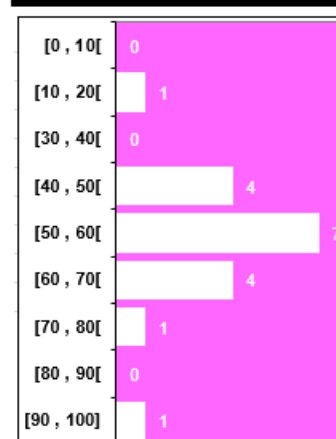
23 participants	
Moyenne	63%



23 participants	
Moyenne	68%



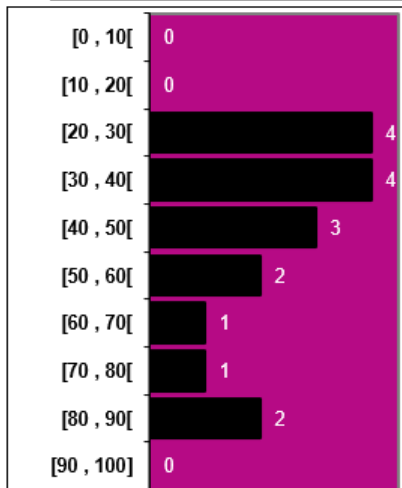
23 participants	
Moyenne	49%



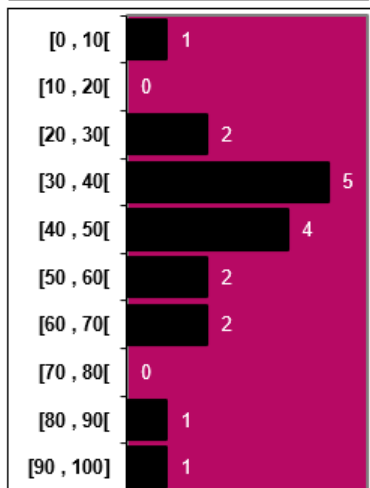
En 5^{ème} primaire :

Score global à l'épreuve		Domaine des nombres		Domaine des grandeurs	
Total / 110	Total en %	Total / 69	Total en %	Total / 41	Total en %
34	31%	22	32%	12	29%
41	37%	29	42%	12	29%
29	26%	21	30%	8	20%
30	27%	24	35%	6	15%
absent(e)	absent(e)	6	9%	absent(e)	absent(e)
52	47%	33	48%	19	46%
39	35%	27	39%	12	29%
96	87%	59	86%	37	90%
53	48%	30	43%	23	56%
47	43%	29	42%	18	44%
97	88%	66	96%	31	76%
57	52%	37	54%	20	49%
37	34%	26	38%	11	27%
67	61%	46	67%	21	51%
23	21%	17	25%	6	15%
79	72%	45	65%	34	83%
58	53%	35	51%	23	56%
absent(e)	absent(e)	absent(e)	absent(e)	18	44%
28	25%	19	28%	9	22%

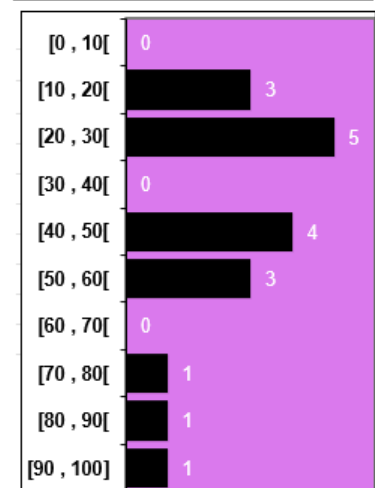
17 participants	Moyenne	46%
-----------------	---------	-----



18 participants	Moyenne	46%
-----------------	---------	-----



18 participants	Moyenne	43%
-----------------	---------	-----



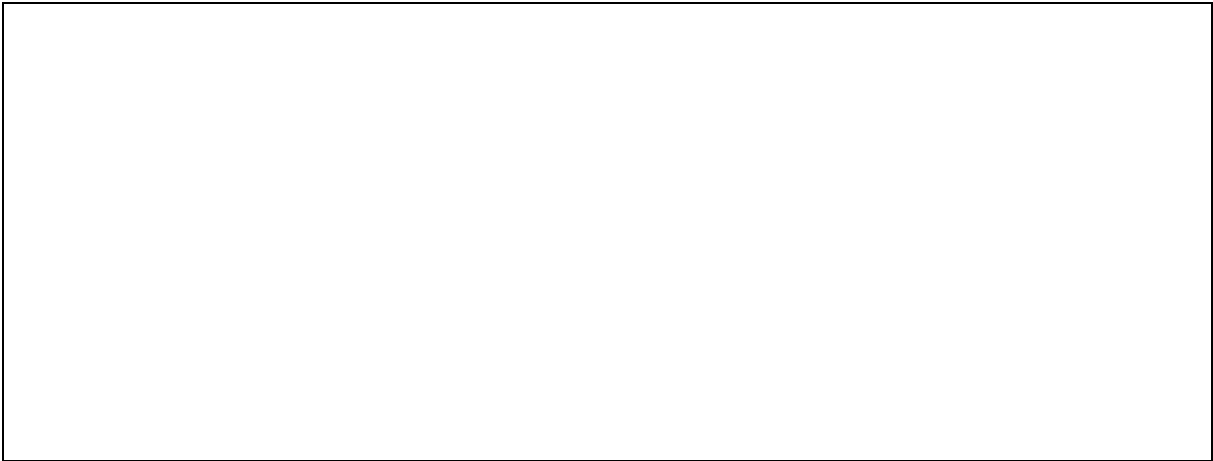
Réflexions du groupe :

1. Ce que nous observons :

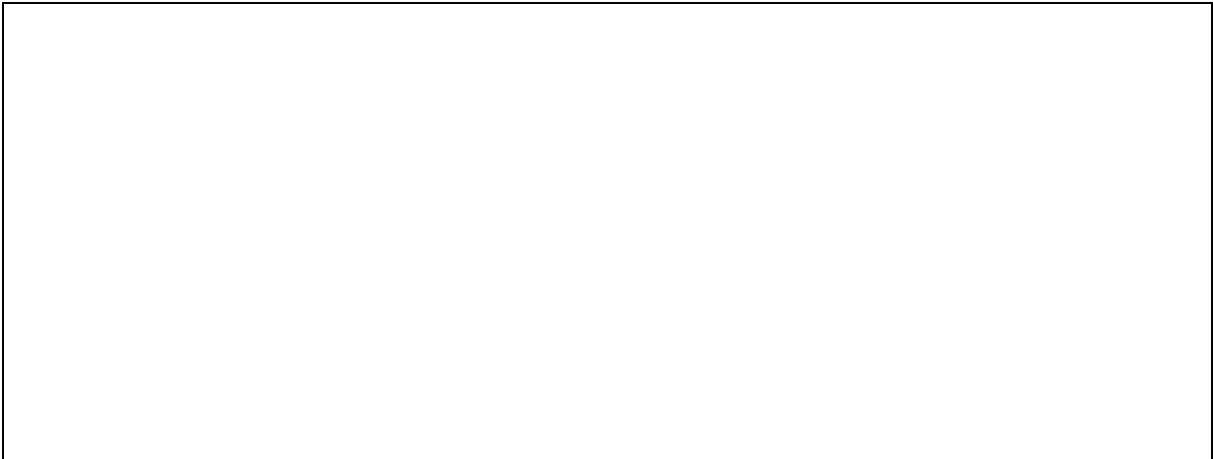
2. Ce que nous interprétons :

3. Les questions que nous nous posons :

4. Les besoins que nous identifions :

A large, empty rectangular box with a thin black border, intended for the user to list the needs they have identified.

5. Une/Des action(s) que nous pourrions entreprendre :

A large, empty rectangular box with a thin black border, intended for the user to list the actions they could take to address the needs.